

U.S. Immigration and Customs Enforcement (ICE)
Structure, Functions, Geographic Distribution, Contacts (Feb. 2025)

*Information contained herein was obtained from publicly available sources at the
Department of Homeland Security*

ICE Organizational Chart 1

Enforcement and Removal Operations (ERO) roles and functions 1

Homeland Security Investigations (HSI) roles and functions..... 3

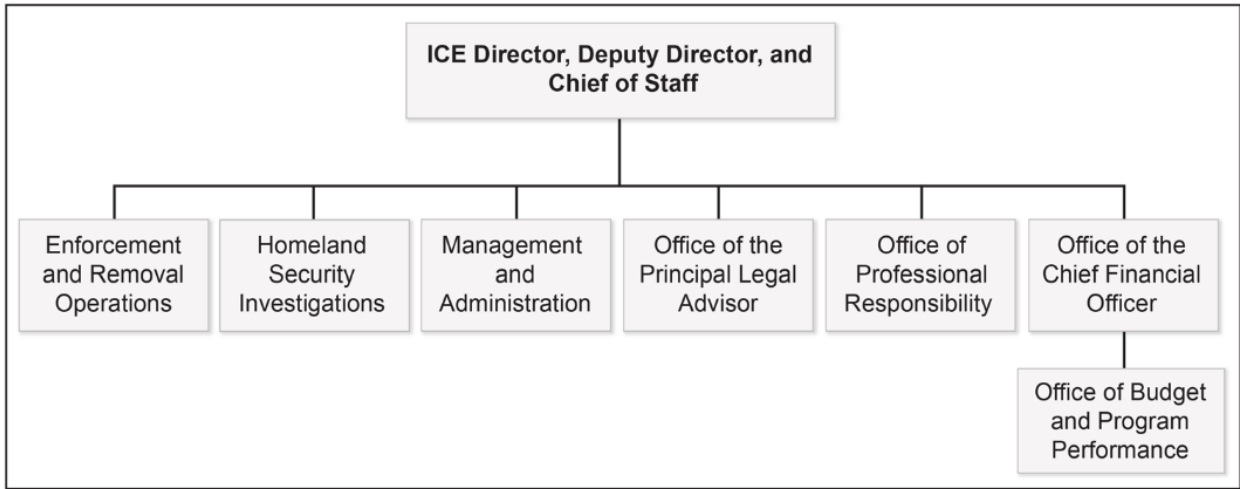
ICE ERO Regions and Field Offices (FY 2023, latest map available)..... 6

Homeland Security Investigations Operational Areas of Responsibility (February 2025) 7

ERO: Field Offices and Points of Contact 8

ICE Organizational Chart

Figure 2: ICE Organization Chart



Source: U.S. Immigration and Customs Enforcement (ICE). | GAO-24-106550

Enforcement and Removal Operations (ERO) roles and functions
Source: <https://www.ice.gov/about-ice/ero>

U.S. Immigration and Customs Enforcement (ICE) Structure, Functions, Geographic Distribution, Contacts (Feb. 2025)

*Information contained herein was obtained from publicly available sources at the
Department of Homeland Security*

- 1) Enforcement: The Enforcement Division manages the enforcement initiatives and components through which ERO identifies and arrests aliens subject to removal from the U.S.:
 - a. The Criminal Alien Program performs strategic planning and establishes policies designed to enhance ICE's ability to arrest and remove aliens from the United States.
 - b. Fugitive Operations facilitates logistical and operational support to 25 ERO field offices by developing, implementing, and overseeing plans and policies in support of the overall National Fugitive Operations Program mission.
 - c. Targeting Operations comprises three support centers, Law Enforcement Support Center (LESC), the National Criminal Analysis and Targeting Center (NCATC), and the Pacific Enforcement Response Center (PERC). These centers apply technical capabilities, analytical tools, and law enforcement expertise to generate intelligence-driven leads on aliens subject to removal.
- 2) Field Operations: At ERO Headquarters (HQ), the Field Operations Division provides guidance to and coordination among ICE ERO's 25 field offices across the nation:
 - a. Domestic Operations oversees, directs and coordinates all ERO Field Operations activities throughout the nation's field offices and sub-offices.
 - b. Special Operations oversees and coordinates ERO's intelligence collection efforts, firearms training and protective equipment procurement, various tactical programs, and communications efforts. The division also oversees ERO operations that support the prevention, preparedness, response, and recovery plans for critical and significant incidents such as terrorist attacks, natural disasters, or other national emergencies or incidents.
- 3) Removal: The Removal Division coordinates, manages and facilitates efforts to successfully remove aliens from the United States. In collaboration with other ICE program offices and the Department of State, ERO also works with international partners to successfully execute removal operations:
 - a. ICE Air Operations provides commercial and chartered aviation support, both domestically and internationally, to all 25 ERO field offices throughout the United States. It also provides air transportation to transfer aliens to designated detention locations and/or to staging sites to accomplish removal flights to aliens' countries of origin.
 - b. Removal Management coordinates the removals of aliens with ERO's 25 field offices nationwide. This unit develops and implements strategies to remove aliens from the United States who are subject to removal by collaborating within

U.S. Immigration and Customs Enforcement (ICE) Structure, Functions, Geographic Distribution, Contacts (Feb. 2025)

*Information contained herein was obtained from publicly available sources at the
Department of Homeland Security*

the agency and with interagency stakeholders, foreign embassies and consulates, and international partners.

- c. International Operations comprises ERO's personnel based overseas and supports the 25 ERO field offices through regular and ongoing liaison with host-nation government officials in the coordination of removal operations.
- 4) Custody Management
 - a. Custody Programs
 - b. Detention Management
- 5) ICE Health Service Corps
- 6) Law Enforcement Systems and Analysis
- 7) Non-Detained Management
- 8) Operations Support

Homeland Security Investigations (HSI) roles and functions

Source: <https://www.dhs.gov/hsi> and <https://www.dhs.gov/hsi/leadership>

- Center for Countering Human Trafficking (CCHT)
- Domestic Operations
- Countering Transnational Organized Crime
- International Operations
- Office of Administrative Operations
- Office of Intelligence
- Cyber and Operational Technology
- Global Trade
- National Security

HSI investigates the following types of crime <https://www.dhs.gov/hsi/investigate>

- Child Exploitation
- Cybercrime
- Cultural Property, Art, and Antiquities Smuggling
- Financial Crime
- Human Smuggling
- Human Trafficking
- Identity and Benefit Fraud
- Intellectual Property Theft and Trade Fraud
- Labor Exploitation

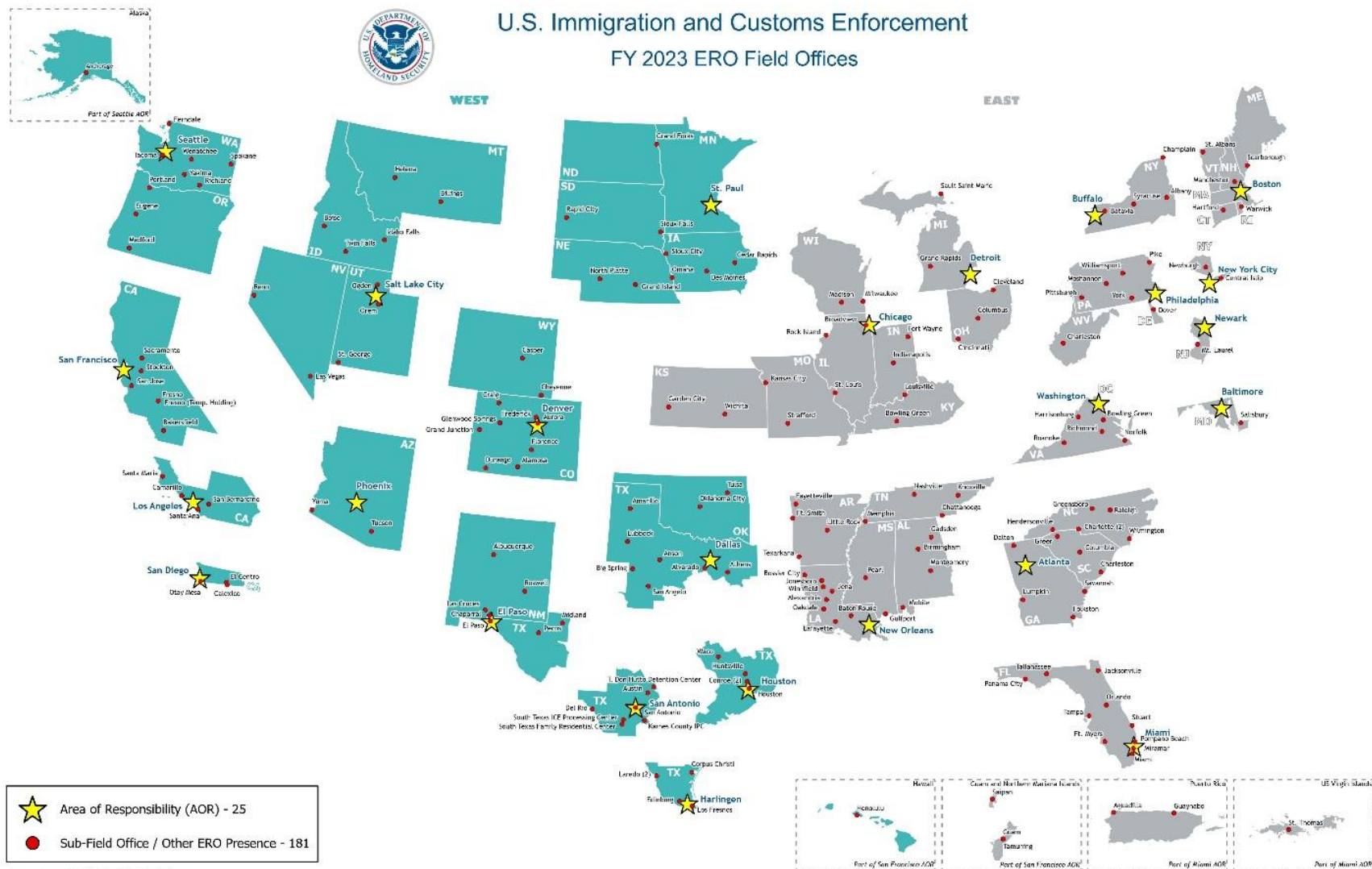
U.S. Immigration and Customs Enforcement (ICE) Structure, Functions, Geographic Distribution, Contacts (Feb. 2025)

*Information contained herein was obtained from publicly available sources at the
Department of Homeland Security*

- Narcotics Smuggling
- Terrorism and National Security Threats
- Transnational Gangs
- Weapons Trafficking
- Wildlife Trafficking

U.S. Immigration and Customs Enforcement (ICE) Structure, Functions, Geographic Distribution, Contacts (Feb. 2025)

*Information contained herein was obtained from publicly available sources at the
Department of Homeland Security*



U.S. Immigration and Customs Enforcement (ICE)
Structure, Functions, Geographic Distribution, Contacts (Feb. 2025)

*Information contained herein was obtained from publicly available sources at the
Department of Homeland Security*

ICE ERO Regions and Field Offices (FY 2023, latest map available)

NOTE: a 25th Field Office (Harlingen, TX) was opened since this map was last updated

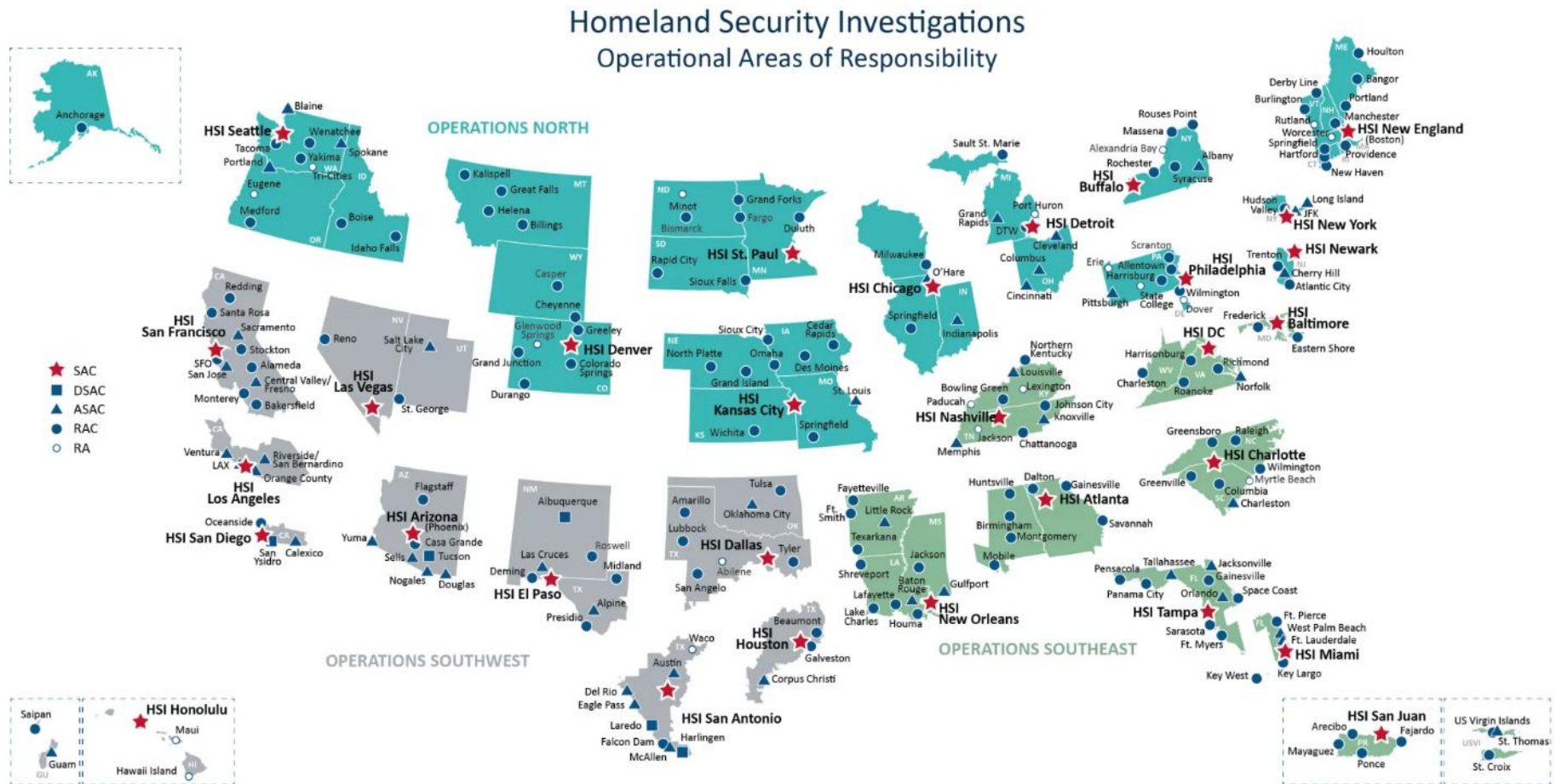
Source: <https://www.ice.gov/doclib/about/offices/ero/pdf/eroFieldOffices.pdf>

U.S. Immigration and Customs Enforcement (ICE) Structure, Functions, Geographic Distribution, Contacts (Feb. 2025)

*Information contained herein was obtained from publicly available sources at the
Department of Homeland Security*

Homeland Security Investigations Operational Areas of Responsibility (February 2025)

Source: <https://www.ice.gov/doclib/eoy/iceAnnualReportFY2024.pdf>



U.S. Immigration and Customs Enforcement (ICE)
Structure, Functions, Geographic Distribution, Contacts (Feb. 2025)

*Information contained herein was obtained from publicly available sources at the
Department of Homeland Security*

ERO: Field Offices and Points of Contact

NOTE: Data is based on internet searches conducted February 2025

Field Office	Field Director/Acting Field Director	Number	Email	States Covered
Atlanta	George Sterling	404-346-2300	George.sterling@ice.dhs.gov	Georgia, North Carolina, South Carolina
Baltimore	Darius Reeves	410-637-4000	Darius.L.Reeves@ice.dhs.gov	Maryland
Boston	Todd Lyons	781-359-7500	todd.m.lyons@ice.dhs.gov	Massachusetts, Connecticut, Rhode Island, New Hampshire, Maine
Buffalo	Thomas Brophy	716-464-5800	Thomas.P.Brophy@ice.dhs.gov	New York State
Chicago	LaDeon Francis	312-347-2400	Unavailable	Illinois, Indiana, Wisconsin, Missouri, Kansas, Kentucky
Dallas	Norman Parrish	972-367-2200	Norman.L.Parrish@ice.dhs.gov	Texas (Central TX), Oklahoma
Denver	Kelei Walker	720-873-2899	Unavailable	Colorado, Wyoming
Detroit	Robert Lynch	313-568-6049	Robert.Lynch@ice.dhs.gov	Michigan, Ohio
El Paso	Mary De Anda-Ybarra	915-225-1901	Mary.B.DeAnda-Ybarra@ice.dhs.gov	Texas (SW Texas), New Mexico
Harlingen	Miguel Vergara	(956) 389-7884	Unavailable	South Texas

U.S. Immigration and Customs Enforcement (ICE)
Structure, Functions, Geographic Distribution, Contacts (Feb. 2025)

*Information contained herein was obtained from publicly available sources at the
Department of Homeland Security*

Field Office	Field Director/Acting Field Director	Number	Email	States Covered
Houston	Bret Bradford	281-774-4816	Unavailable	Texas (SE Texas)
Los Angeles	Tim Robbins	213-830-7911	Timothy.S.Robbins@ice.dhs.gov	California (Central CA)
Miami	Garrett Ripa	954-236-4900	Garrett.J.Ripa@ice.dhs.gov	Florida
New Orleans	Mellissa Harper	504-599-7800	mellissa.b.harper@ice.dhs.gov	Louisiana, Arkansas, Mississippi, Alabama, Tennessee
New York City	Kenneth Genalo	212-436-9485	Kenneth.Genalo@ice.dhs.gov	New York (metro area)
Newark	John Tsoukaris	973-776-3274	John.Tsoukaris@ice.dhs.gov	New Jersey
Philadelphia	Camilla Wamsley	215-656-7164	Camilla.Wamsley@ice.dhs.gov	Pennsylvania, West Virginia
Phoenix	John Cantú	602-257-5900	Unavailable	Arizona
Salt Lake City	Michael Bernacke	801-886-7400	Michael.V.Bernacke@ice.dhs.gov	Utah, Idaho, Montana
San Antonio	??	210-283-4750	Unavailable	Texas (Central Texas)
San Diego	Gregory J. Archambeault	619-436-0410	Gregory.J.Archambeault@ice.dhs.gov	California (Southern Border)
San Francisco	Moises Becerra	415-365-8800	Moises.Becerra@ice.dhs.gov	California (North)
Seattle	Drew Bostock	206-277-2000	drew.h.bostock@ice.dhs.gov	Washington, Oregon
St. Paul	Peter Berg	612-843-8600	peter.b.berg@ice.dhs.gov	Minnesota, North Dakota, South Dakota, Iowa, Nebraska

U.S. Immigration and Customs Enforcement (ICE)
Structure, Functions, Geographic Distribution, Contacts (Feb. 2025)

*Information contained herein was obtained from publicly available sources at the
Department of Homeland Security*

Field Office	Field Director/Acting Field Director	Number	Email	States Covered
Washington	Kimberly Zanotti	703-633-2100	Unavailable	District of Columbia and Virginia