

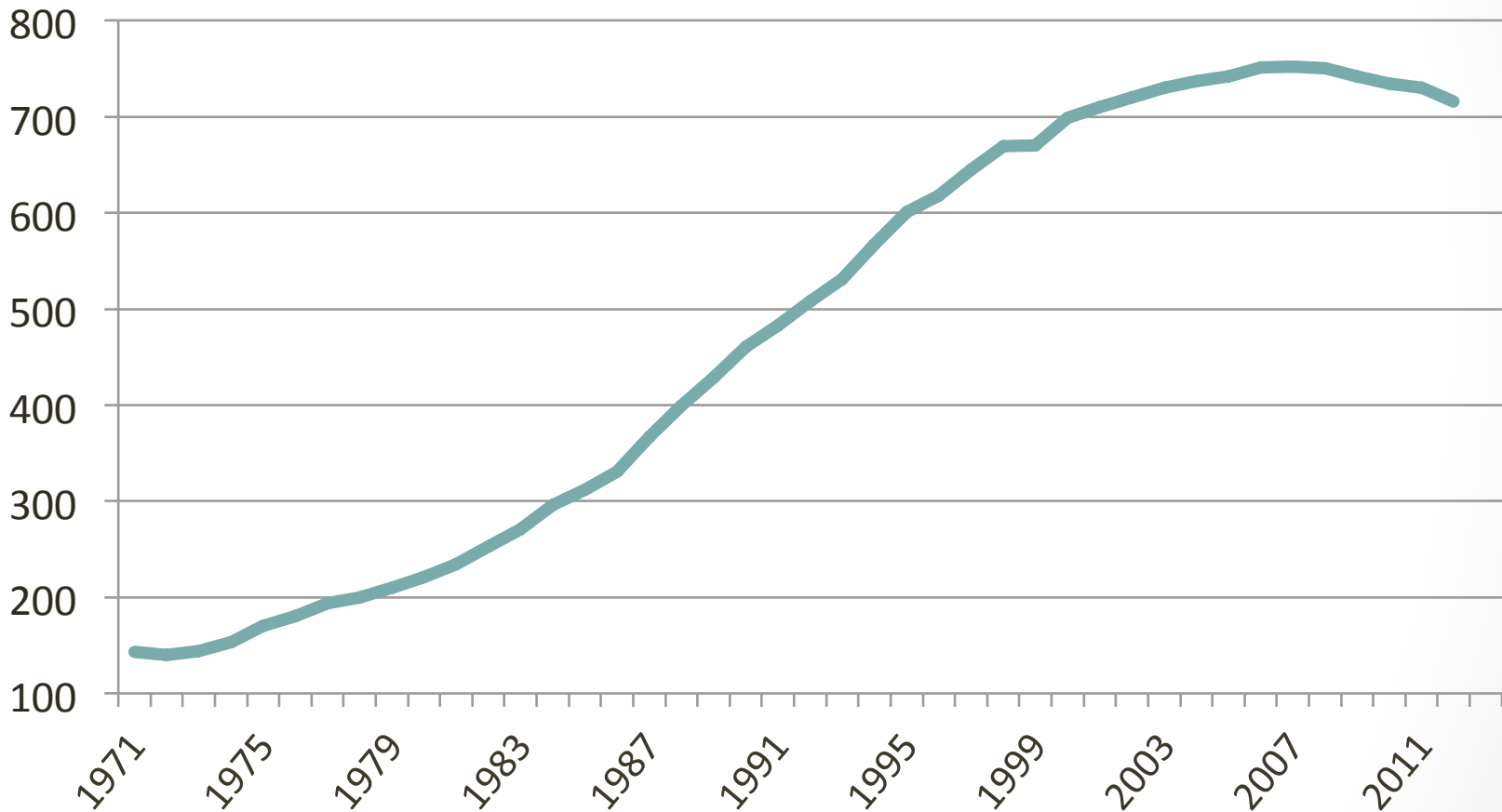
The Reentry Challenge in Washington State

Katherine Beckett

University of Washington

May 28, 2015

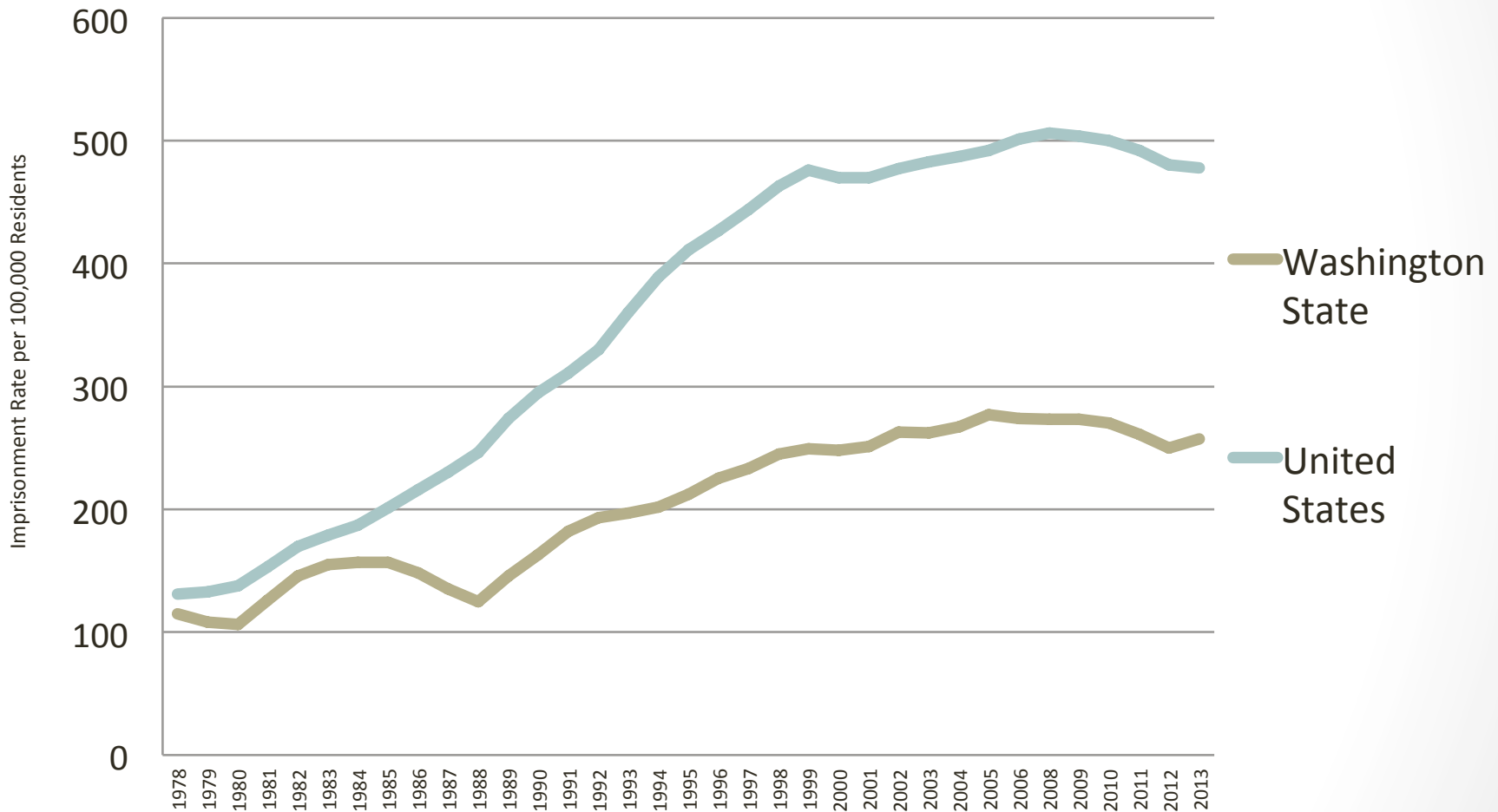
U.S. Incarceration Rate, 1971-2012



Source: The Sentencing Project

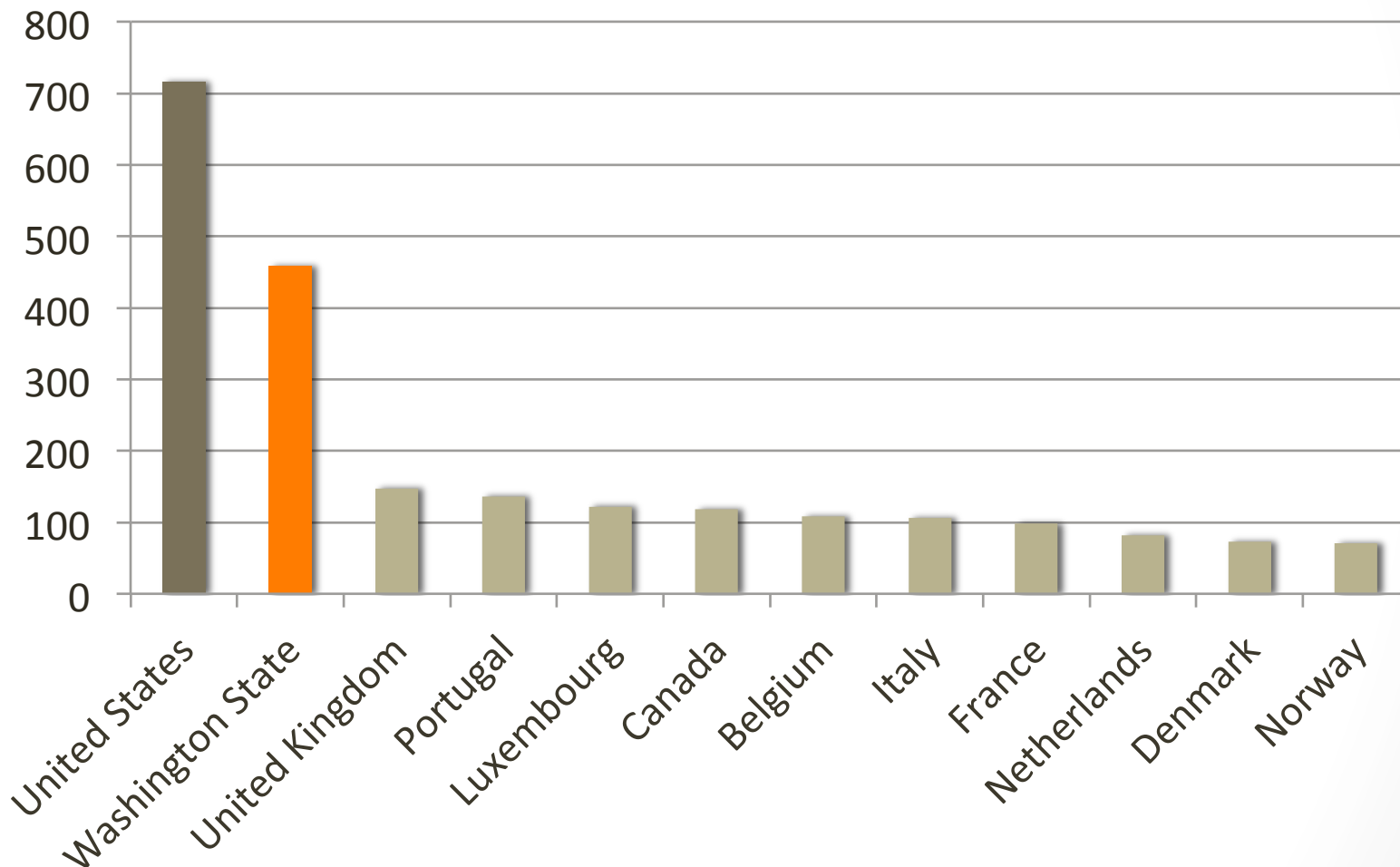
Note: Incarceration rates are calculated per 100,000 residents

Imprisonment Rate, Washington State v. United States, 1978-2013



Source: Carson, E. Ann and Mulako-Wangota, Joseph. Bureau of Justice Statistics. (Imprisonment rates of jurisdiction population - sentences greater than 1 year). Generated using the Corrections Statistical Analysis Tool (CSAT) - Prisoners at www.bjs.gov. (19-May-15). Report Generated: May 19, 2015 13:57 PM

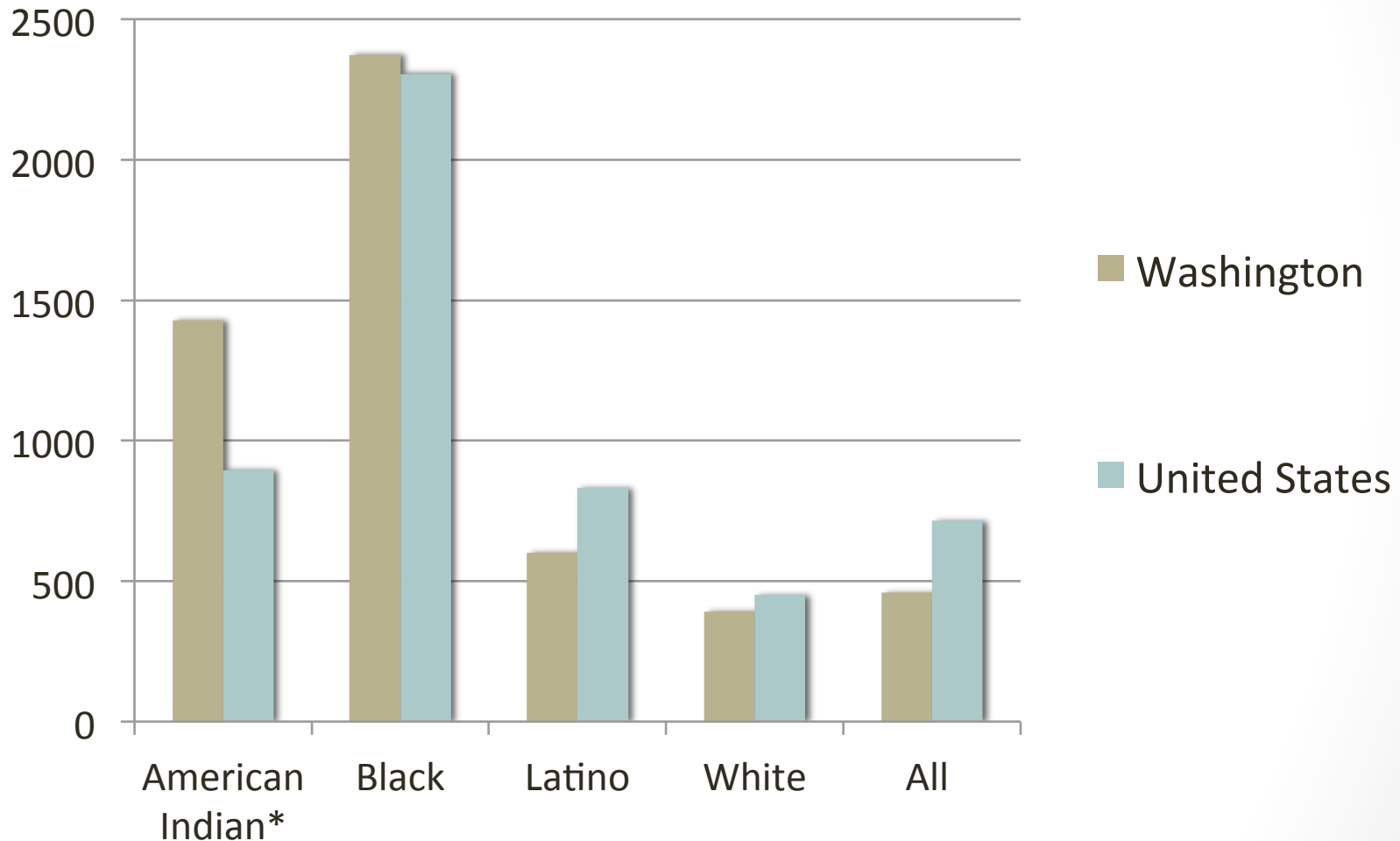
Incarceration Rates in Washington State and Founding NATO Countries, 2012-3



Source: Prison Policy Project, <http://www.prisonpolicy.org/global/>

Note: Incarceration rates include jail and prison inmates and are calculated per 100,000 residents

Incarceration Rates by Race/Ethnicity, Washington v. United States, 2010-11

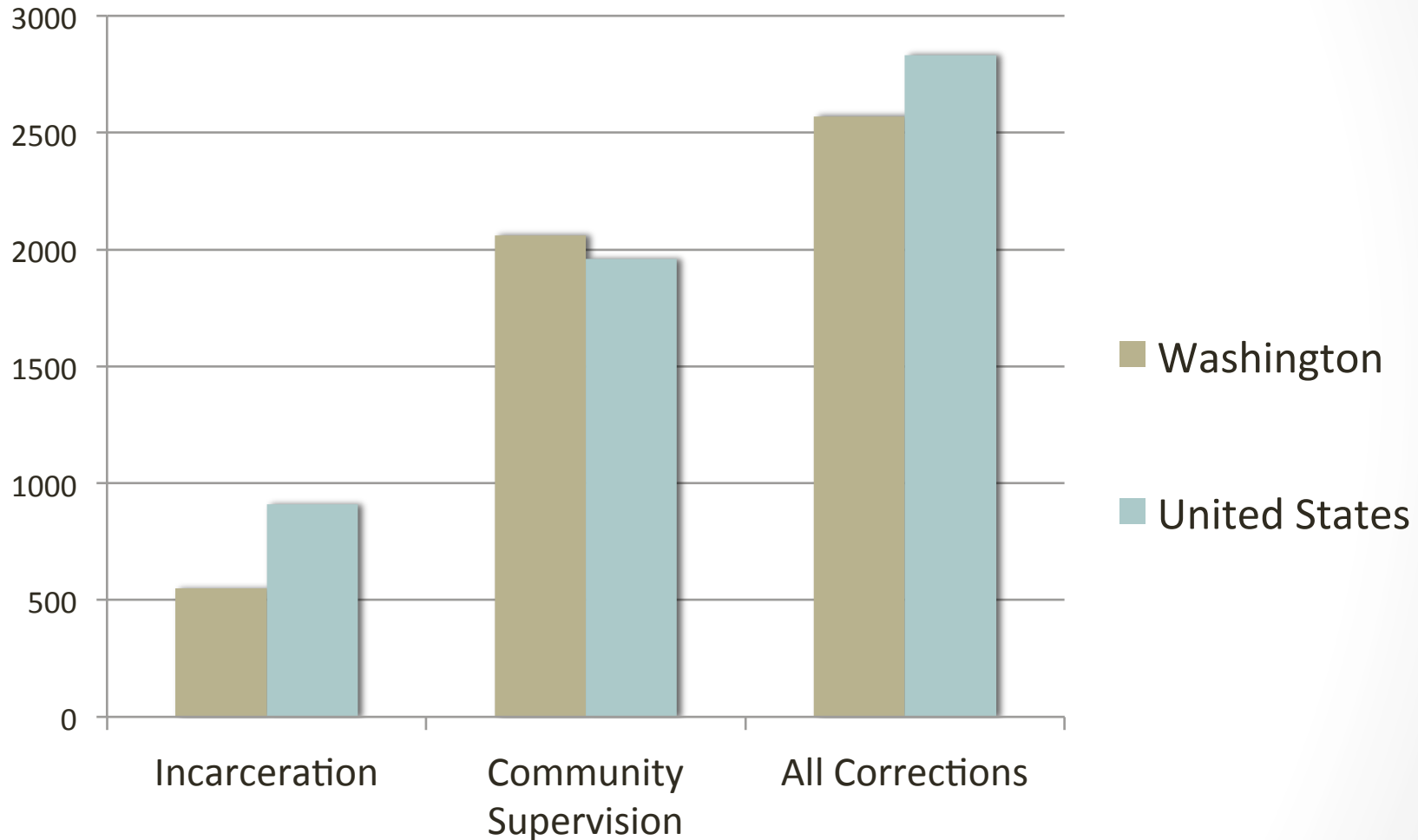


Source: Prison Policy Initiative interactive website, available at <http://www.prisonpolicy.org/profiles/WA.html>

Notes: Incarceration rates include jail and prison inmates, and are calculated per 100,000 residents. The

American Indian category also includes Alaska Natives

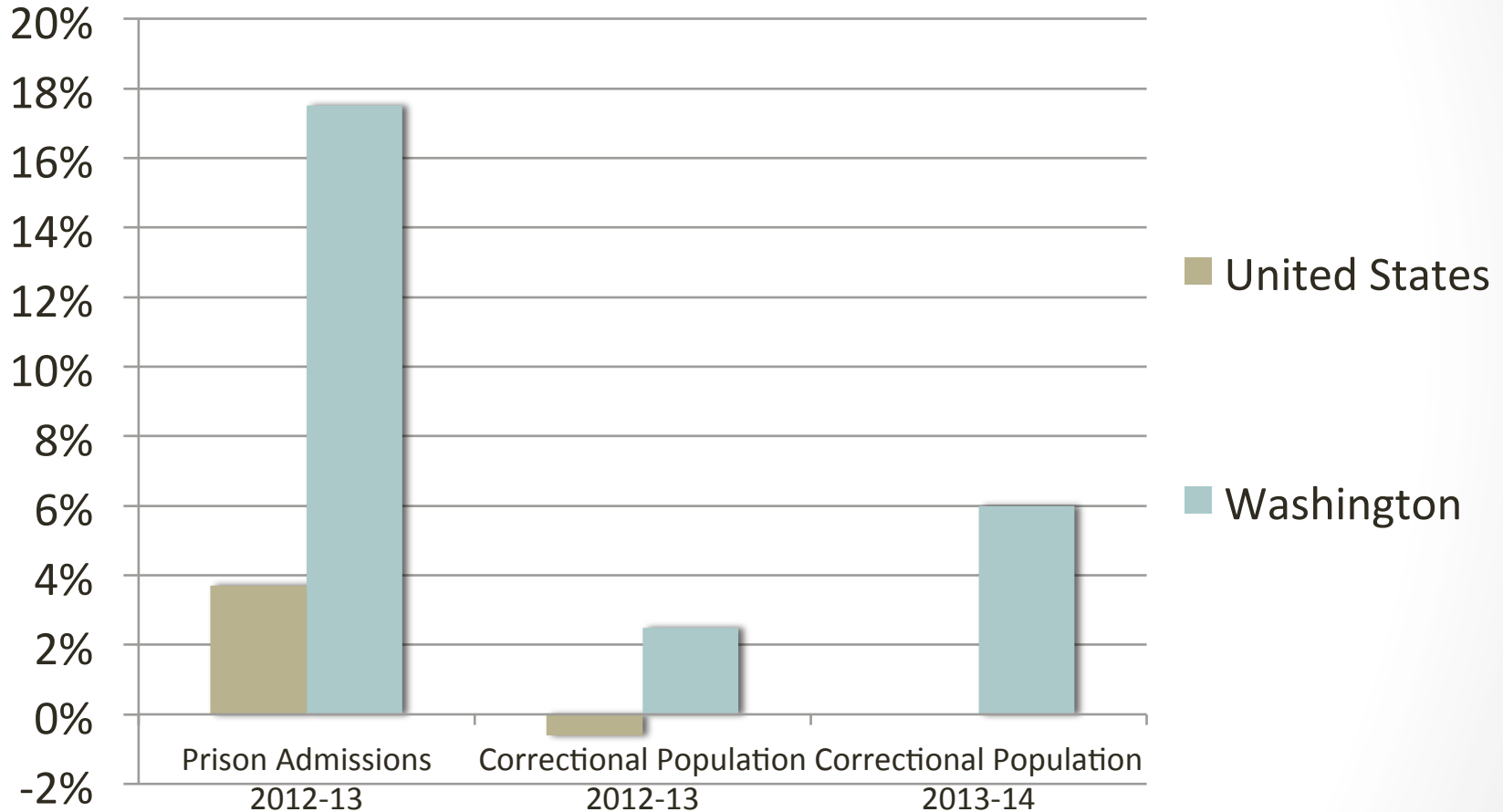
Rates of Correctional Supervision, Washington v. United States, 2013



Source: Bureau of Justice Statistics, *Correctional Populations in the United States, 2013*, Appendix Table 1

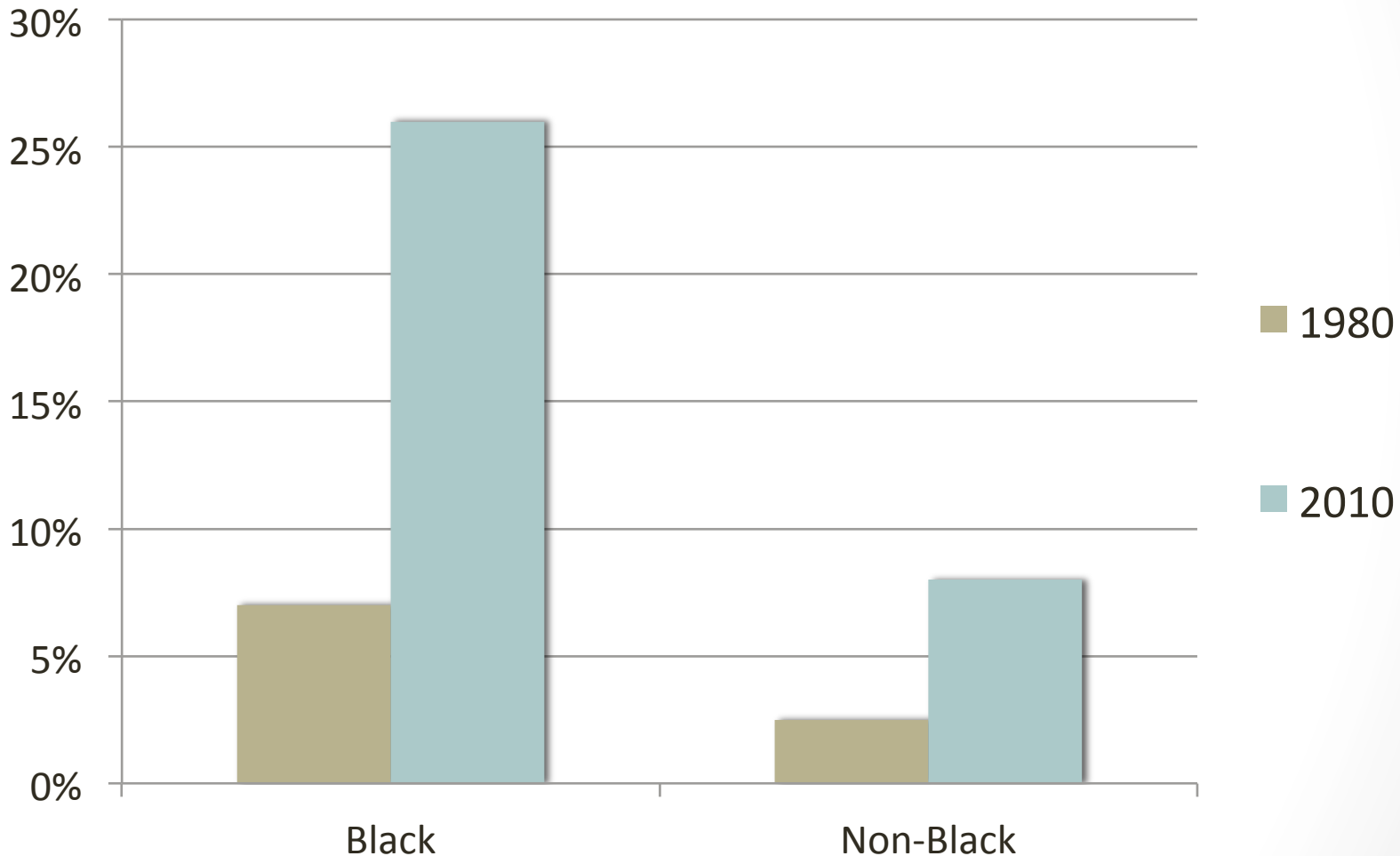
Note: Here, rates are calculated per 100,000 **adult** residents.

Recent Change in Correctional Indicators , Washington State v. United States, 2012-3



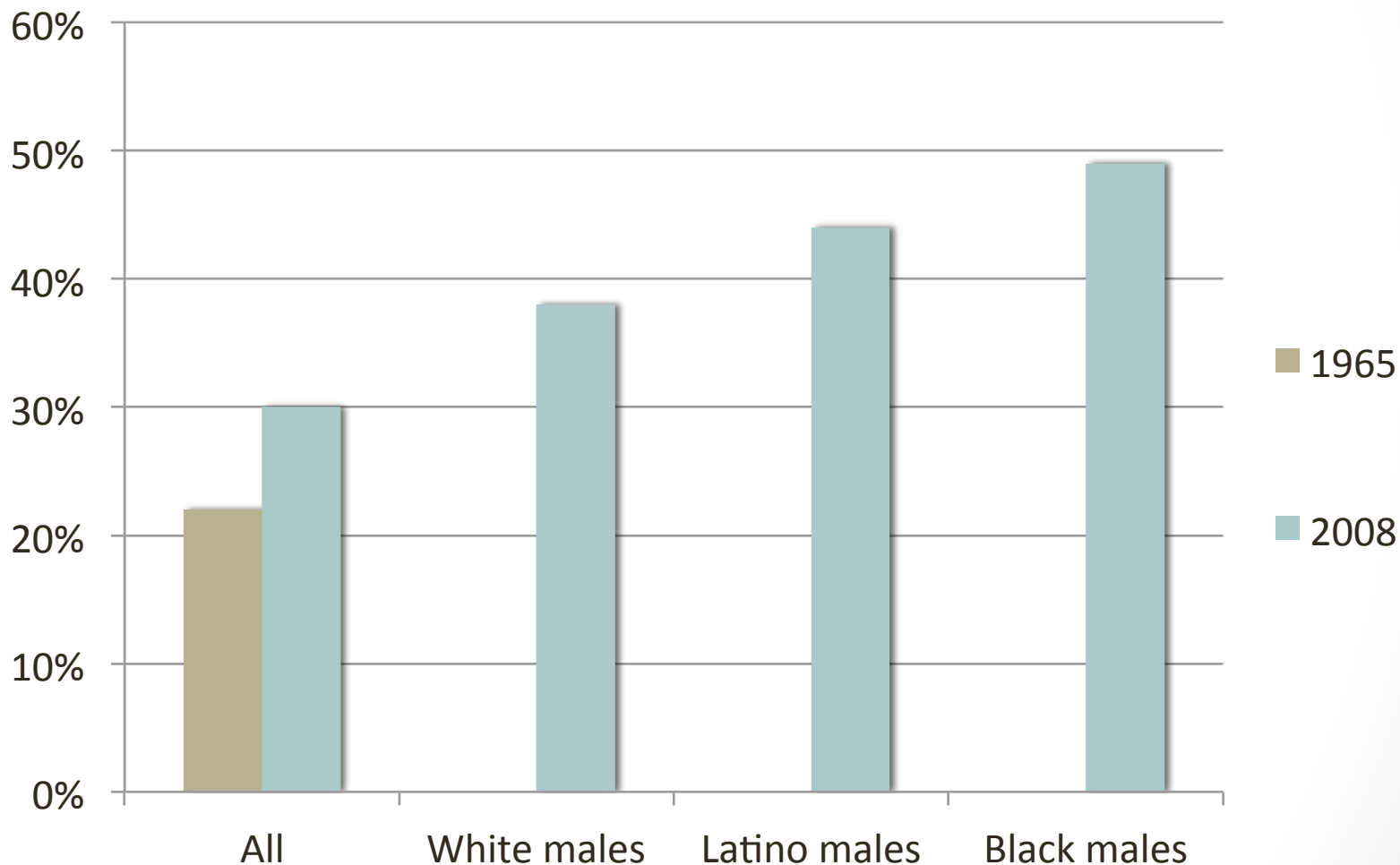
Sources: Bureau of Justice Statistics, *Correctional Populations in the United States, 2013* and Washington State Caseload Forecast Council, Washington State Adult Supervision data

Proportion of U.S. Adults with a Felony Record, 1980 and 2010



Source: Sarah Shannon, Christopher Uggen. Melissa Thompson, Jason Schnittker, and Michael Massoglia, "Growth in the U.S. Ex-Felon and Ex-Prisoner Population, 1948-2010"

Proportion of U.S. Adults with an Arrest Record by Age 23

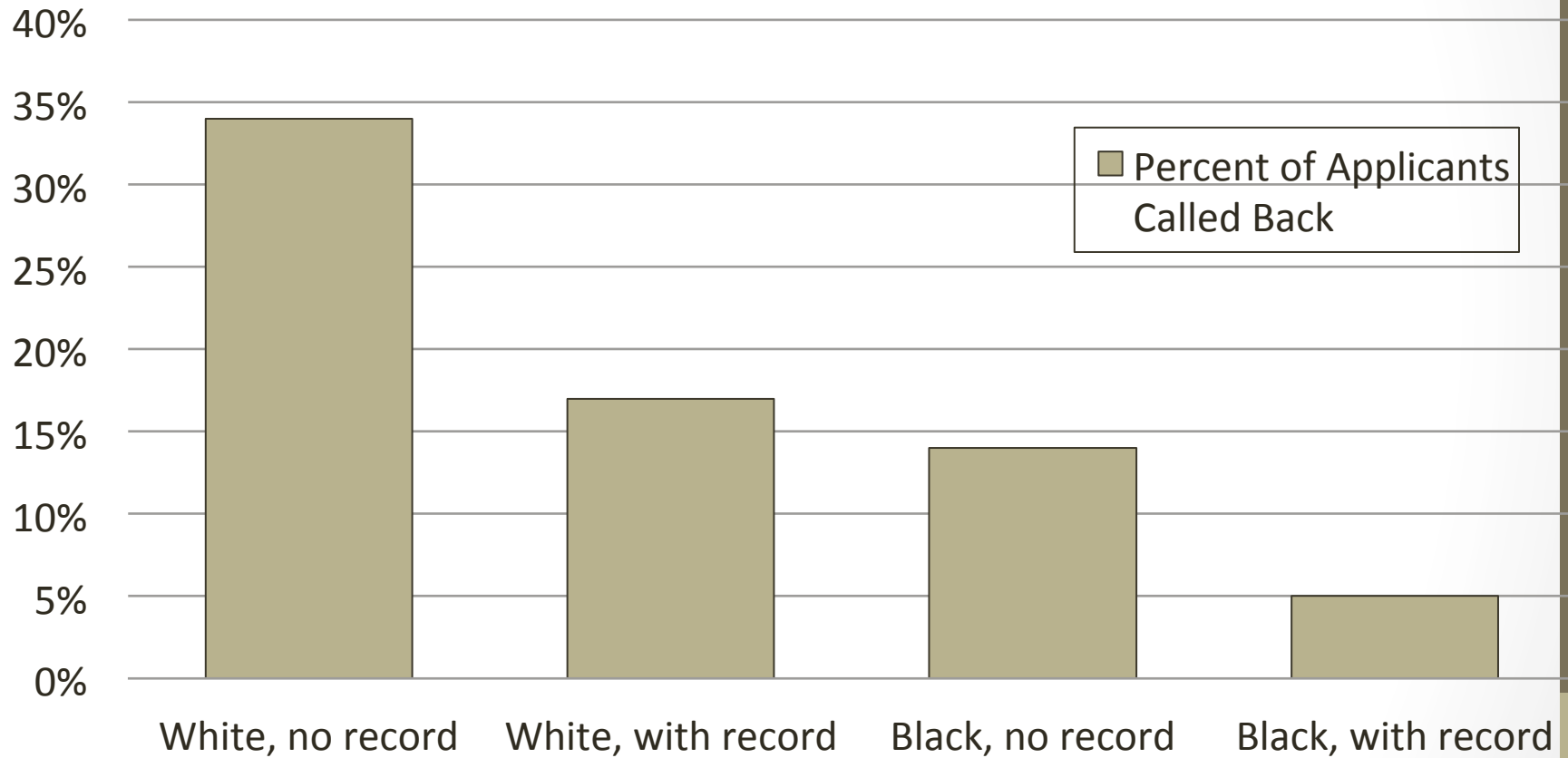


Source: Michael Brame, Michael G. Turner, Raymond Paternoster, and Shawn D. Bushway, "Cumulative Prevalence of Arrest from Ages 8 to 23 in a National Sample," *Pediatrics* 129, 1 (2012): 21-7.

The Growth of the Criminal Records Industry

- **The information technology revolution:**
 - Criminal records are more widely available and easily retrieved
 - Most landlords and employers in the U.S. now check these records; this is relatively new
- **Comparison with European practice and policy is instructive**
 - European records begin with conviction, not arrest
 - In most cases, European records are available to police, prosecutors and judges, but not private citizens

The Collateral Consequences of Having a Criminal Record: Evidence from a Recent Study



Source: Devah Pager, *Marked: Race, Crime and Finding Work in the Era of Mass Incarceration* (University of Chicago Press, 2007)

Concluding Thoughts

- Although Washington's imprisonment rate is lower than the U.S. average:
 - It is high by international standards
 - The incarceration rate in Washington for blacks and Native Americans is *higher* than the national average
 - Washington's correctional supervision rate is only slightly lower than the national average
 - Washington's prison and correctional populations continue to grow at a rapid pace
- People leaving prisons and jails, as well as those contending with a criminal conviction absent incarceration, face considerable re-entry challenges
- Washington state law means that criminal history information remains in state databases forever absent sealing